



Save the Date
 "Wednesday"
 "26th April, 2017 "

Registration Fees:

PEC Registered Engineers

Rs. 1000/- per person

Industrial Participants

Rs. 1000/- per person

IEFR Alumni

Rs. 1000/- per person

IEFR Enrolled Student

Rs. 300/- per person

VENUE: NFC IEFR, Jaranwala Road, Faisalabad.
 Auditorium, Electrical Engineering Dept.
 Timings: 09.00 AM – 3.00 PM

CONTINUING PROFESSIONAL DEVELOPMENT PROGRAM

One Day CPD Course on RELIABILITY CENTERED MAINTENANCE

Reliability centered maintenance (RCM) is a corporate-level maintenance strategy that is implemented to optimize the maintenance program of a company or facility. The final result of an RCM program is the implementation of a specific maintenance strategy on each of the assets of the facility

Course Highlights

1. Definition of RCM
2. Preliminary Assessment Test
3. Structures & Machines
4. Maintenance Strategies
5. Reliability Centered Maintenance
6. Assets Optimization
7. Goals of RCM
8. Function, Functional Failures
9. Failure Modes, Failure Effects
10. REC VS Traditional Maintenance
11. RCM Implementation

FOR REGISTRATION

Engr. Umair Munir

Cell #: 03445244454

Email: umair.munir@gmail.com

Rana Yasir

Cell #: 03236552020

Resource person

Mr. Zahoor Ahmed Saleem

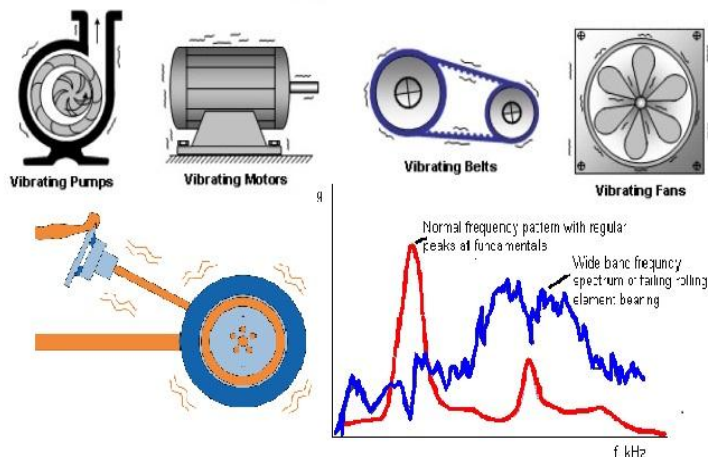
Manager (W/Shop, Fab) Century Paper and Board Mills

RCFA EXPERT

ROTARY MACHINE ANALYST (KRL, Islamabad)

LEVEL-III VIBRATION ANALYST (Mobius Institute, Australia)

Plant Reliability Advisor



Department of Mechanical Engineering NFC Institute of Engineering & Fertilizer
 Research Jaranwala Road, Faisalabad - Ph: 0419220355-57 Ext. 134